

MCDU A320

INSTRUCTIONS FOR USE AND FIRST CONNECTION



The MCDU is equipped with a Plug'n'Play Ethernet motherboard for XPLANE 11 and Flight Factor A320 Ultimate or PROSIM A322.

Each MCDU is connected to the card by a connection ribbon.

The Homecockpits.fr motherboard has an Ethernet port where you can connect an RJ45 cable to the port of your computer.

The screen is powered by a USB port.

The rider is optional if the MCDU 2 is not connected.

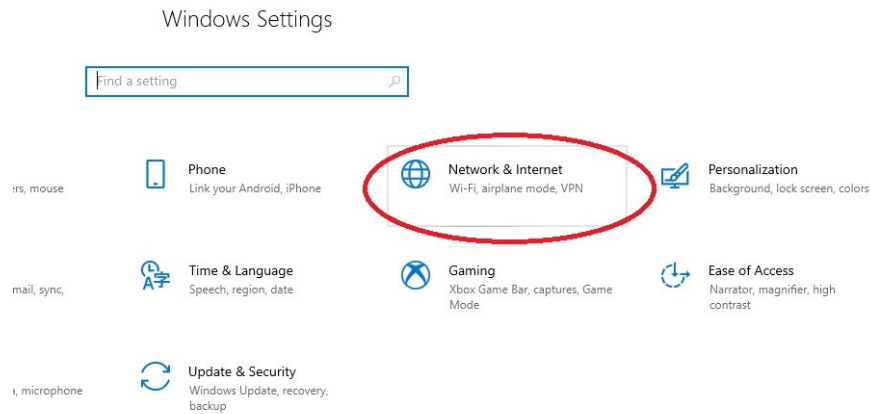
If you already have Homecockpits.fr Plug'n'Play products other than this one, you just need to add an Ethernet hub to connect them to your computer.

**THANK YOU FOR FOLLOWING THIS LITTLE
MANIPULATION FOR THE FIRST CONNECTION OF YOUR
FIRST CARD:**

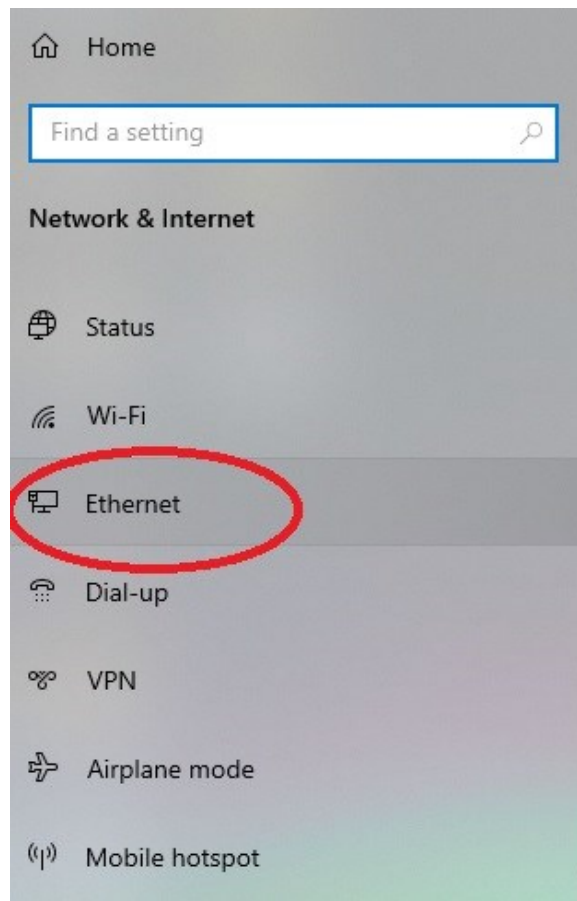
IN WINDOWS:

Open settings,

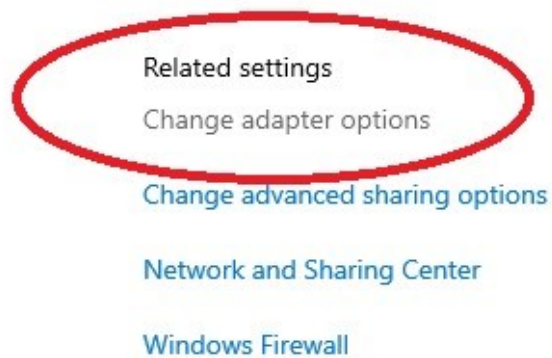
Then `` Network and Internet ''



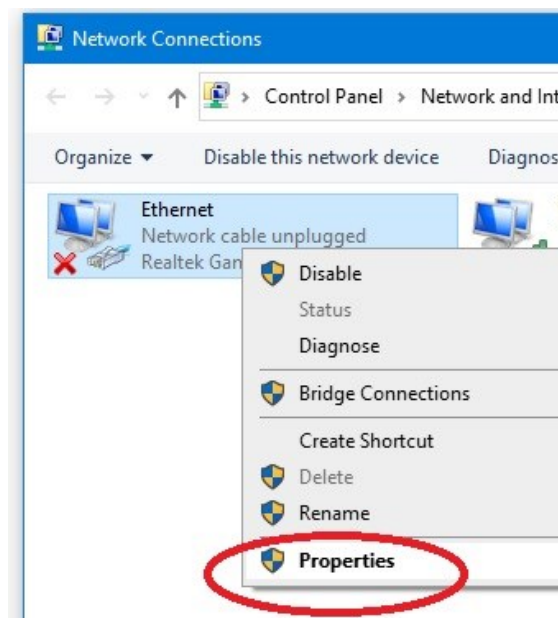
Choose Ethernet in the left tab



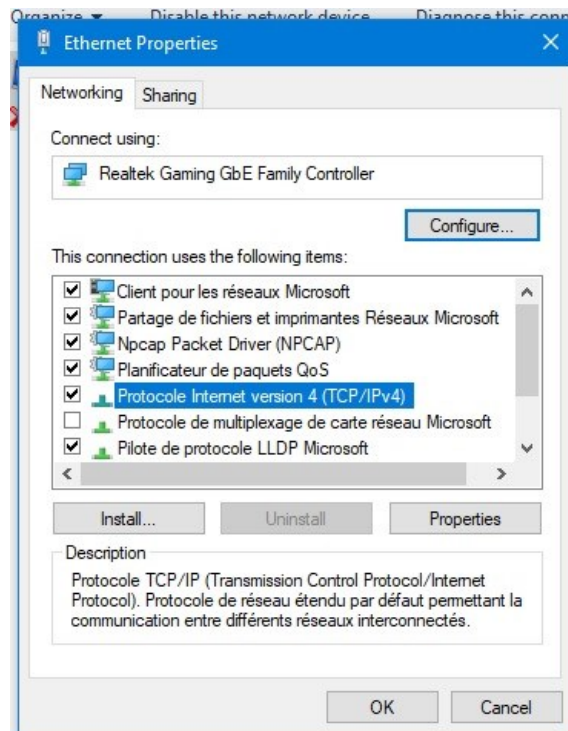
Then choose " change adapter options " in the right tab



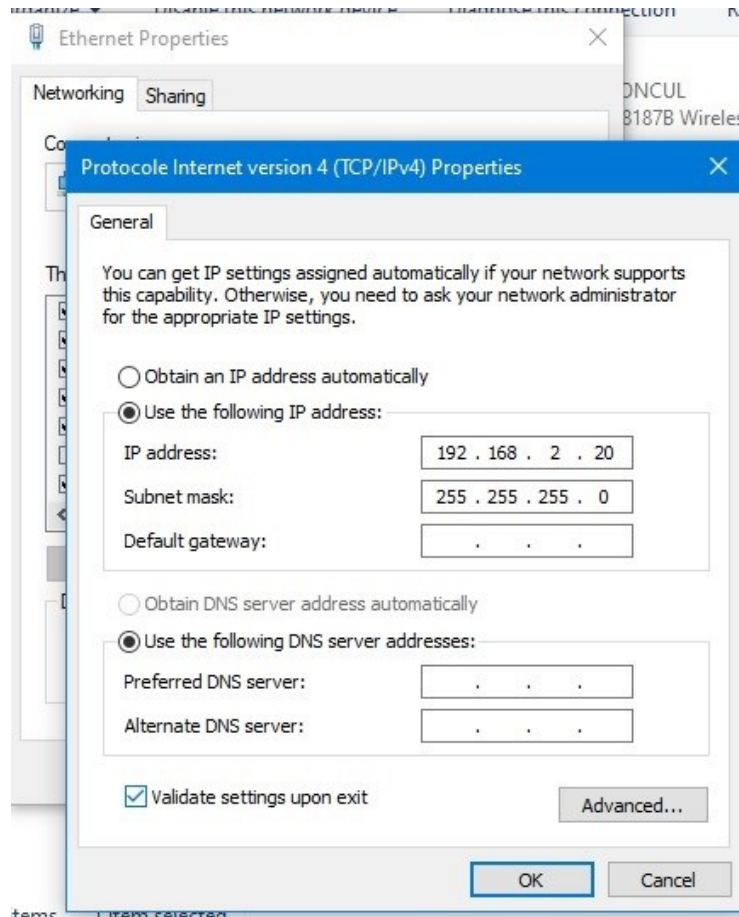
Right click on your internet connection (icon in the task bar) and click on "Properties".



Choose the line " IPV4 " then click on " Properties "



**THANK YOU FOR COMPLETING AS EXAMPLE GIVEN IN
THE FOLLOWING IMAGE**



ONCE THIS STEP IS VALIDATED, ALL HOMECOCKPITS.FR PRODUCTS WILL BE AUTOMATICALLY RECOGNIZED.

IN THE CASE OF **FLIGHT FACTOR A320:**
FFA320 ALLOWS THE INTERFACING OF THEIR
PRODUCTS THANKS TO **FFCONNECTOR AVAILABLE ON**
OUR SITE.

Download it then extract the archive and move the whole thing to your XPLANE 11 folder:

xplane11 / aircraft / laminar / flightfactora320 / plugin

YOU CAN NOW CONNECT THE RJ45 CABLE TO YOUR COMPUTER.

It is strongly recommended to power the motherboard

ONLY ONCE XPLANE 11 AND FFA320 ARE IN OPERATION.

THE MOTHERBOARD IS INITIALIZED IN APPROXIMATELY 15 SECONDS.

You are now ready to use your Homecockpits.fr product.

Thank you for your confidence !

